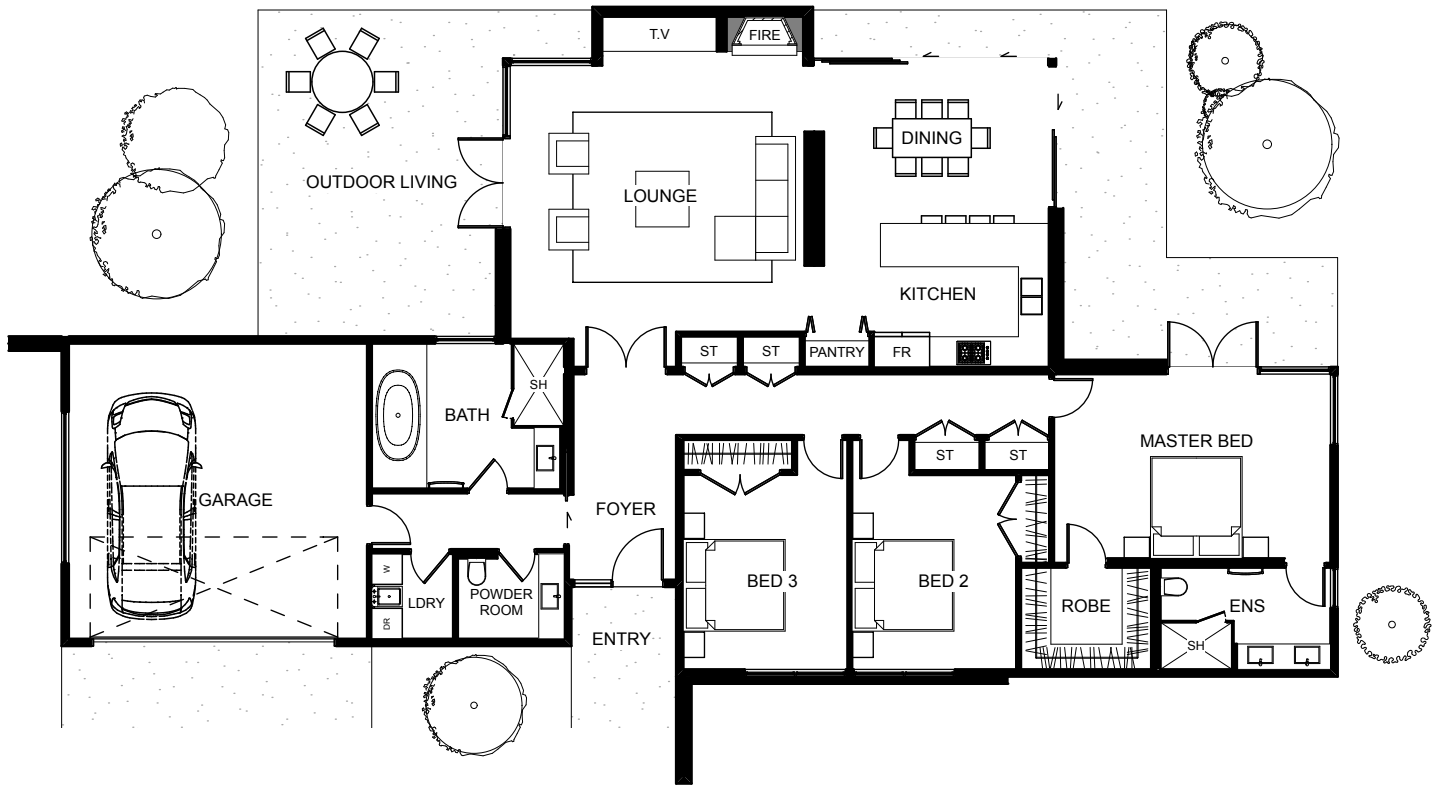




The entrance foyer of the Stoney Bay flows into a lounge that is ideal for welcoming visitors. The lounge, open plan kitchen and dining are surrounded by large windows right at the back of the home. The bedroom's flow seamlessly off a central hallway with the master bedroom being complete with an ensuite and walk in robe. There is a powder room off the garage which is perfect for freshening up and plenty of storage though the house. The Stoney Bay is a house just waiting to be turned into a home.



Floor Area: 208m²

 2
  4
  2
  18.1m
  14.5m

Contact us:
 Ph 07 866 0449
 M 021 494 474
 E info@hamrhome.co.nz
www.hamrhome.co.nz



HAMR
home