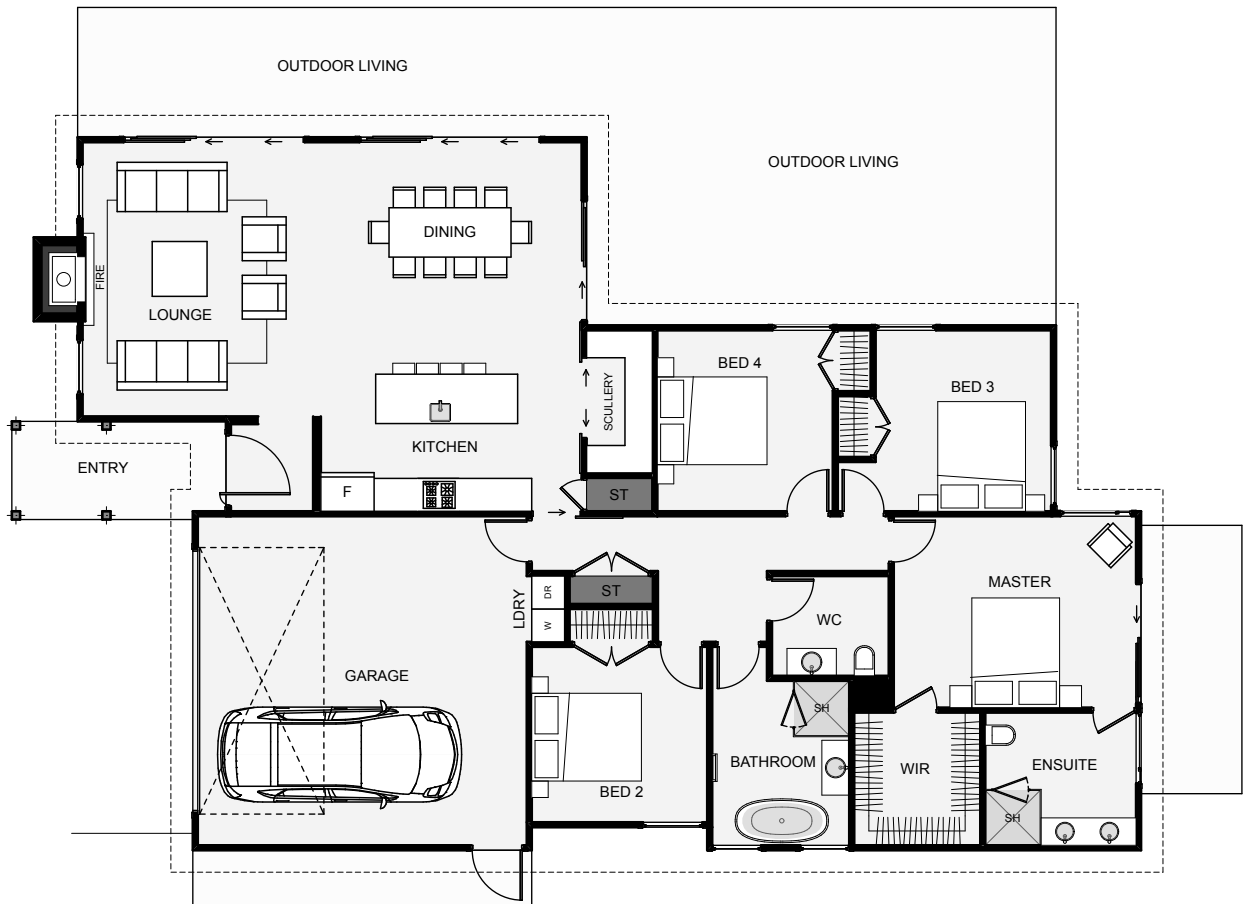




The Kauri oozes with timeless street appeal and character, the kind of home that doesn't date. The home is also surprisingly small in size with no downsides. The home includes a good size scullery, four bedrooms, a decent master with a large walk-in wardrobe and ensuite with a dual vanity, plus some fine exterior styling that will last a lifetime!



Floor Area: 195m²

 2
  4
  2
  1
  20.1m
  13.0m

Contact us:
 Ph 07 866 0449
 M 021 494 474
 E info@hamrhome.co.nz
www.hamrhome.co.nz



HAMR
home