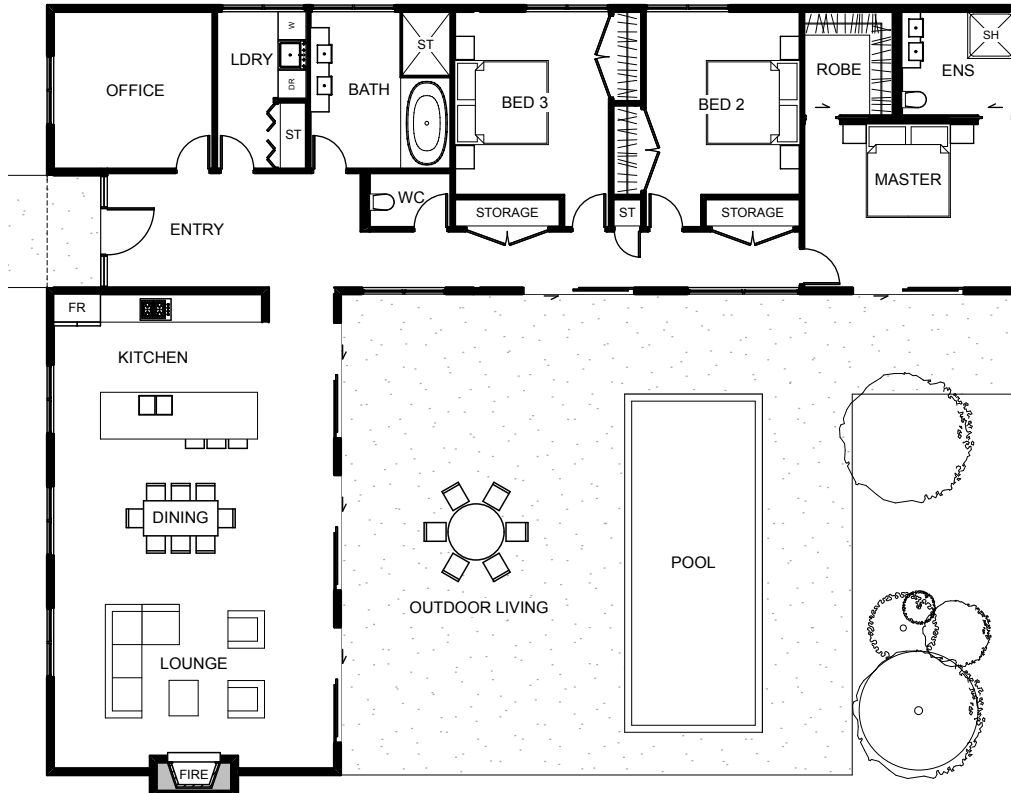







The stylish Kaimarama is a beautifully modern home with great features and a distinct family focus. This home provides each family member with individual space, while offering a commercial open plan kitchen, dining and living that brings people together in a relaxed and comfortable way. There is an office space near the entry and the bedrooms flow off a central corridor including a luxurious master bedroom and ensuite. The Kaimarama is your sanctuary.



Floor Area: 191m²

 0-2
  3+
  2
  20.8m
  16.5m

Contact us:
 Ph 07 866 0449
 M 021 494 474
 E info@hamrhome.co.nz
www.hamrhome.co.nz



HAMR
home