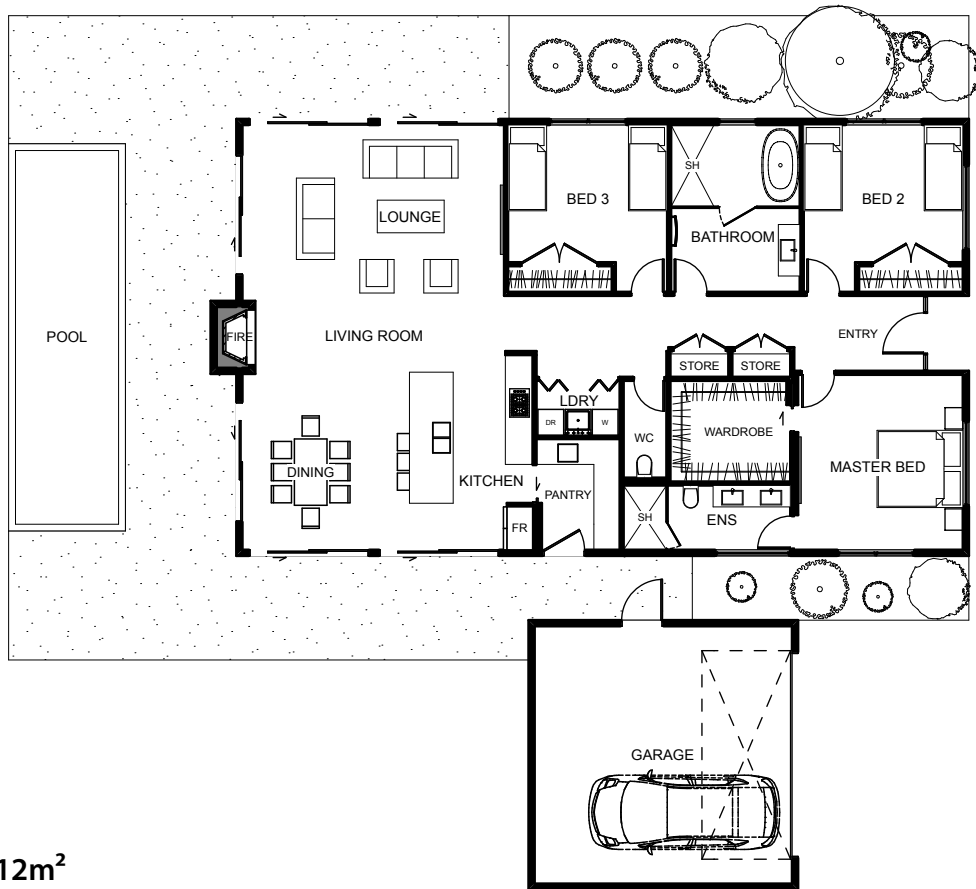




The Colville is a modern design that offers a seamless flow from the entry foyer to the open plan living area located at the opposite end of the home. Featuring three generous bedrooms, including a larger private master bedroom with ensuite and a walk in robe. The Colville combines practical family living with personal comforts. Relax in the open plan living area or enjoy the seamless transition from indoors to outdoors with the alfresco outdoor living. The Colville is a practical home design for the growing family.



Floor Area: 212m²

 2
  3
  2
  16.8m
  18.0m

Contact us:
 Ph 07 866 0449
 M 021 494 474
 E info@hamrhome.co.nz
 www.hamrhome.co.nz

