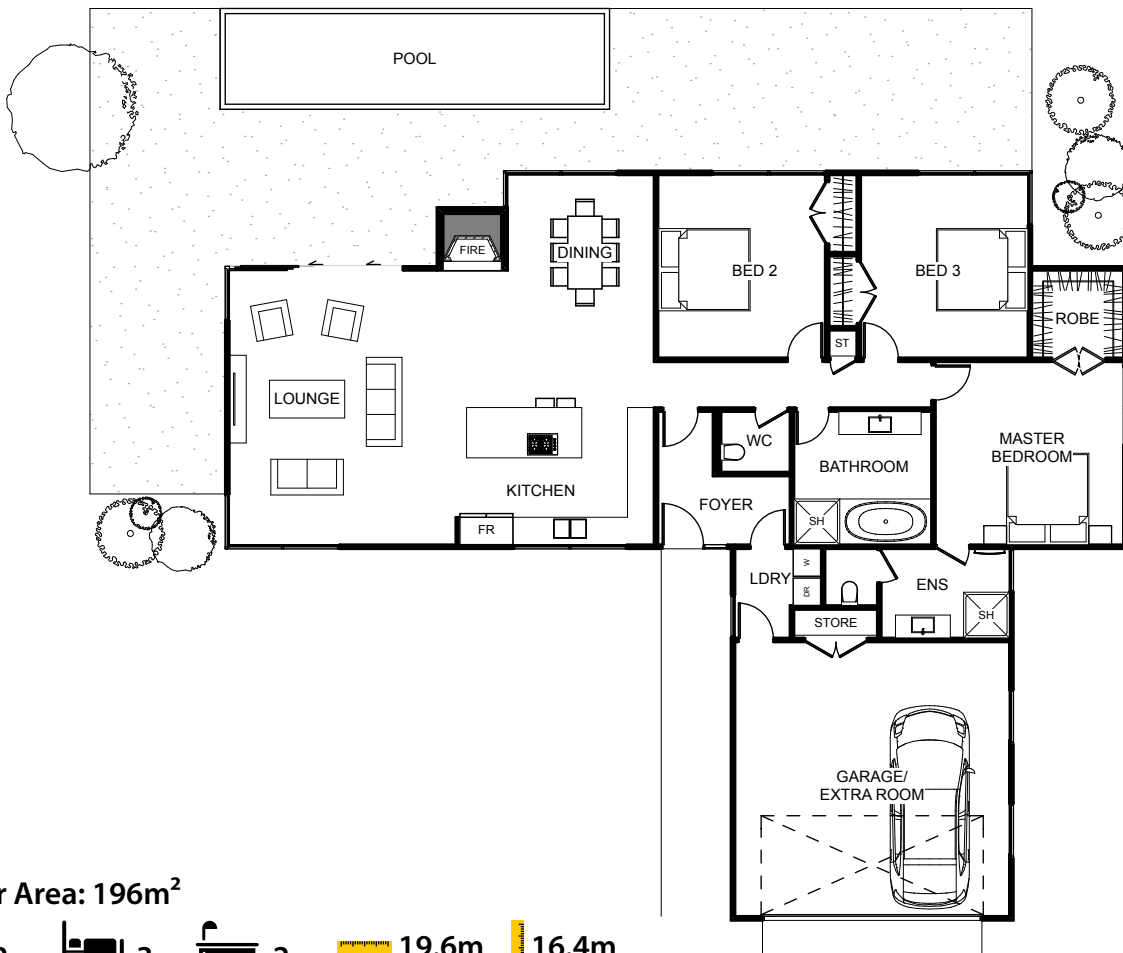




The Esplanade offers practical family living with a unique sense of space. This home includes three bedrooms that effectively offer privacy from the open plan living when needed, with the highlight being the rear positioned master bedroom with walk in robe and ensuite. The open planned living/entertaining hub offers something for all members of the family as well as easy accessibility to the outdoor living area. The Esplanade delivers a practical design to support modern family life.



Floor Area: 196m²

 2
  3
  2
  19.6m
  16.4m

Contact us:
 Ph 07 866 0449
 M 021 494 474
 E info@hamrhome.co.nz
www.hamrhome.co.nz

