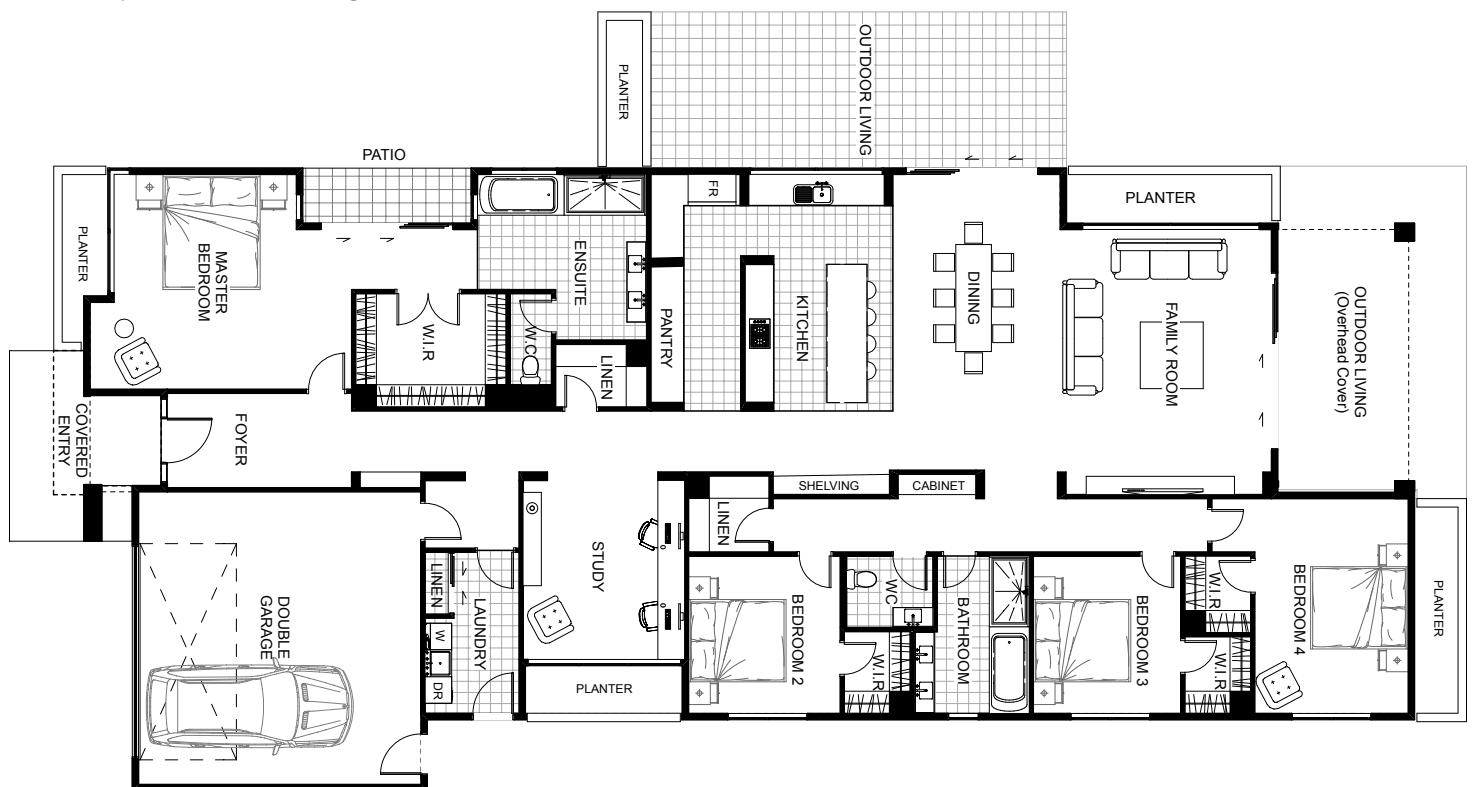







A modernist facade with a sleek entry cover makes the single storey Cathedral Cove a striking addition to any streetscape. The master suite will not disappoint with its large walk in robe, a flowing ensuite with twin vanity and double sliding doors opening out onto a private patio. The study is a large open room which can also be used as a movie, rumpus or day room, the choice is yours. The Cathedral Cove also sports a large chef's kitchen with mass amounts of bench and storage space. Three double bedrooms intergrate perfectly within the home's envelope leading onto the living which seamlessly flows out onto two optional outdoor living areas.



Floor Area: 333m²

 2
  4
  2
  29.9m
  14.0m

Contact us:
 Ph 07 866 0449
 M 021 494 474
 E info@hamrhome.co.nz
www.hamrhome.co.nz

